



ESPRIT PARK MIXED USE RESIDENTIAL

PROJECT NARRATIVE

Esprit Park is a 162,122 ft² luxury condominium project in the heart of the historic Dog Patch district of San Francisco, CA. Adding four 6-story steel structures while retaining the timber framing and ornate brick building that once served as a winery, this project offers 142 condominiums and four commercial units including a restaurant.

CONX SOLUTIONS

The architect utilized the flexibility of the ConX System to create multilevel transitions from existing to new construction reducing the need for additional core building components such as elevators and exit stairs.

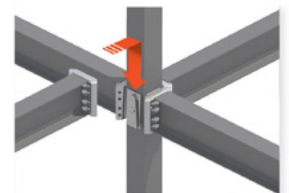
KEY PROJECT DATA

161,122

Square Feet

32

Days to Erect Steel



CONXR200

STAKEHOLDERS

Owner	Build Inc.
Architect	Jon Worden Architects
Engineer	FBA Engineers
Contractor	Palisade Builders
Steel Fabricator	ConXtech Manufacturing
Steel Erector	ConXtech Construction
ConXtech Scope	Structural Steel, Stairs, Metal Decking, Exterior Panels



CONTACT US