

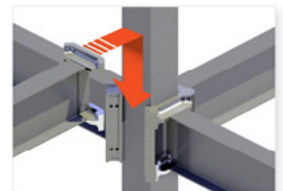
SANTA MONICA HIGH SCHOOL DISCOVERY BUILDING EDUCATION

PROJECT NARRATIVE

The Santa Monica High School Discovery Building is a new 3-story structure erected on top of podium level parking. This innovative building was designed using the “open building” design concept, with a flexible, open-column grid, raised floors and non-load bearing walls which can be reconfigured over time. ConXtech’s brace-free structural solution was an integral part of making that possible. The project has been recognized as the winner of the ENR California Best Projects 2022: Best K-12 Education, among various other recognitions.

PROJECT DATA

Square Footage	280,000 ft ²
Steel Assembly Duration	25 Days
Number of Collars	153
Bay Spacing	38'-0"



CONXL 400


STAKEHOLDERS

Owner	Santa Monica -Malibu Unified School District
Architect	HED Design
Engineer	Saiful. Bouquet Structural Engineers
Contractor	McCarthy Construction
Steel Fabricator	ConXtech/Zamil
Steel Erector	ConXtech
ConXtech Scope	Main Structural Steel




Click the links to see the articles, awards and videos.

Outside the lines.



Shapeshifter.

HED, in collaboration with Shapeshifter, designed a dramatic new Santa Monica High School's (SMHS) school and the surrounding educational, cultural and recreational spaces and circulation, and supports whole child development and diverse learning styles.




PROJECTS | BUILDINGS BY TYPE | K-12 SCHOOLS DESIGN


Discovery Building at Santa Monica High School by Moore Ruble Yudell and HED

Santa Monica, California

By Sean Amador



Along the western side of the Discovery Building is an Open



HED + Moore Ruble Yudell present the new Santa Monica High School Discovery Building,



CONTACT US

ConXtech, Inc. 6600 Koll Center Parkway, Suite 210, Pleasanton, CA 94566
E-mail: info@conxtech.com | Phone: 510-264-9111 | www.ConXtech.com