



RIVERSIDE COMMUNITY HOSPITAL MEDICAL OFFICE

PROJECT NARRATIVE

This four-story, 61,367 ft² ConXL structure is part of the Riverside Community Hospital's \$315 million campus expansion project. It provides practices with state-of-the-art medical space to meet the growing healthcare needs of Riverside and surrounding areas.

CONX SOLUTIONS

Inherently free of braces and shear walls, the ConXL System easily accommodates a wide variety of medical imaging equipment in this building with design flexibility for future configurations.

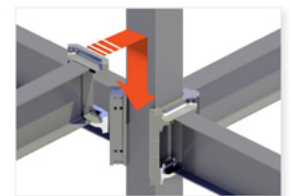
KEY PROJECT DATA

61,367

Square Feet

8

Days to Erect Steel



STAKEHOLDERS

Owner	Riverside Community Hospital
Architect	Perkins + Will
Engineer	John A. Martin & Associates
Contractor	DPR Construction
Steel Fabricator	ConXtech Manufacturing
Steel Erector	ConXtech Construction
ConXtech Scope	Structural Steel, Metal Decking, Stairs



CONTACT US