



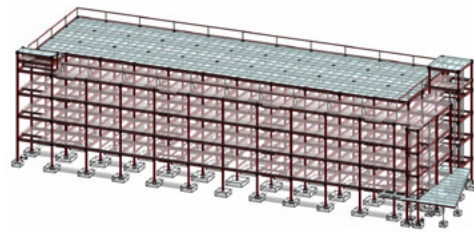
Coresite LA-3 Data Center

PROJECT NARRATIVE

The Coresite LA3 project is a 4 story Data Center with a rooftop mechanical platform. This 180,000+ Sq.Ft. data center building offers a robust, long-span steel data center frame devoid of shear walls and bracing which provides for a fully open floor plan for interior buildouts. This building will serve our clients' needs for data storage solutions to keep up with the ever-changing technology business requirements.

CONX SOLUTIONS

The ConXL System addressed CoreSite's need for a robust, long-span steel data center frame delivered cost-effectively and with increased speed to market. Although the ConXL System was utilized in the main frame of the structure, the ConXR System was also used on the roof to support cooling towers and for framing the canopy located in the building's lobby. The structure also features a louver support frame using our elevator guide rail and roof screen details. The 90-foot columns were fabricated, shipped and erected at full-height which is both more time and cost effective. ConXL's inherent lack of shear walls and bracing allow for a fully open and reconfigurable floor plan which provides ultimate flexibility for mechanical system routing and future upgrades.



PROJECT DATA

Square Footage	180,000 ft ²
Steel Assembly Duration	28 Days
Number of Collars	279
Bay Spacing	30'-0"
Structure Weight	1,750 tons

STAKEHOLDERS

Owner	CoreSite
Architect	DCM
Engineer	John A. Martin & Associates (JAM)
Contractor	DPR Construction
Steel Fabricator	ConXtech/ /Thai Herrick
Steel Erector	ConXtech Construction
ConXtech Scope	Structural Steel, Mechanical Platform, Stairs & Elevator

