

KAISER PERMANENTE WATTS HEALTHCARE

PROJECT NARRATIVE

A 65,000-square-foot, 3-story medical office building located in Los Angeles, CA offering a range of amenities to the residents of Watts and surrounding communities. Those amenities include new medical services; expanded counseling, education, and preschool services; an open-air play yard; community rooms; and a public plaza.

CONX SOLUTIONS

Expedited occupancy for client. Rapid turn over to other follow-along trades. Standard processes expedite cycle time. Pre-fabricated components accelerate delivery schedule. Pre-approved connections accelerated plan checks and regulatory approvals.

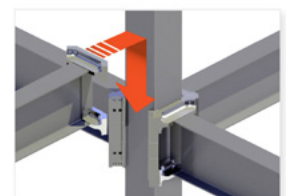
KEY PROJECT DATA

65,000

Square Feet

7

Days to Erect Steel



CON XL 400

STAKEHOLDERS

Owner	Kaiser Permanente
Architect	Perkins&Will
Engineer	John A. Martin & Associates
Contractor	Swinerton Builders
Steel Fabricator	ConXtech Manufacturing
Steel Erector	ConXtech Construction
ConXtech Scope	Structural Steel, Stairs, Metal Decking

CONTACT US

ConXtech, Inc. 6600 Koll Center Parkway, Suite 210, Pleasanton, CA 94566
E-mail: info@conxtech.com | Phone: 510-264-9111 | www.ConXtech.com

